

Interfaces	
USB port output, type A:	Primarily for USB Bluetooth dongle
USB port input, type B:	USB connection from PC
24V DC in:	DC power, 2.5 mm
24V DC throughput:	DC power, 2.5 mm
AURICAL Speaker (optional)	
Dimensions:	Approx. 375 x 285 x 145 mm (14.8 x 11.2 x 5.7 inches) , 1.5 kg (3.3 lb)
Output:	RCA phone optimized for 8 Ω speaker
Transport and storage	
Temperature:	-30°C to +60°C (-22°F to 140°F)
Air humidity:	10% to 90%, non-condensing
Air pressure:	500 hPa to 1060 hPa
Operating environment	
Mode of operation:	Continuous
Temperature:	+15°C to +35°C (59°F to 95°F)
Air humidity:	30% to 90%, non-condensing
Air pressure:	980 hPa to 1040 hPa.
AURICAL FreeFit	
Bluetooth:	Version 2.0, Class 2 (10m/33 ft)
Frequency Resolution:	1/24 Octave or 1/3 Octave, in 4 channels
Dynamic Range:	> 80 dB
Calibration Data:	Stored electronically inside the probe
Intensity Accuracy:	± 3 dB
Measurement Intensity Range:	Probe Microphone 40-130 dB SPL
Probe Microphone:	Intensity: 40 – 130 dB
Reference Microphone:	Intensity: 40 – 110 dB
Battery Type:	One rechargeable battery* Ni-MH, AA (R6) 1.2V. Can also be used with Alkaline AA (R6) 1.2V
Battery lifetime:	5 hours of continuous use
Inductive Charger unit	
Nominal Input voltage:	9 V DC
Max Power Consumption:	300 mA (at 9 V input voltage while charging)
Power Supply**:	
Input voltage range:	100-240 V AC, 50-60 Hz
Output voltage range:	9 V DC
System requirements	
<ul style="list-style-type: none"> <li>• 1.5 GHz processor or higher (2 GHz recommended)</li> <li>• 512 MB RAM (1 GB recommended) for Windows 2000 and XP, or 1 GB (1.5 GB recommended) for Windows Vista and Windows 7</li> <li>• 700 MB free disk space for installation of the OTOsuite software. Additional disk space is needed for installation of prerequisites</li> <li>• Microsoft® Windows® 2000 with SP3, or Windows® XP (32 bit) with SP3 or higher, or Windows Vista (32 bit) with SP2, or Windows 7 (32 or 64 bit)</li> <li>• USB port for connecting accessories, v. 1.1, or 2.0</li> <li>• DVD or CD-ROM drive</li> <li>• 32 bit color display, 1024x768 screen resolution</li> <li>• 32 MB graphic memory</li> <li>• Windows-compatible sound card</li> <li>• Supports NOAH 3.5, NOAH 3.5 for ENTs, or higher, for NOAH mode operation</li> <li>• Speaker system must be powered, and accept line input (2.9 Vpp at full volume)</li> <li>• Minimum available output level from powered speaker, 200-8000Hz: 85 dB SPL (1 meter distance, pure tone, maximum 2% distortion)**</li> <li>• Note: If you are going to use speech material supplied by GN Otometrics**, check the Speech Material Installation CD to make sure that your PC has the additional disk space required.</li> </ul>	
Counseling and Simulations module	
Hearing Loss Simulator, Hearing Instrument Simulator, Speech Mapping, Predicted Aided Audiogram	
Stimuli:	Sound library, live, recorded signals, CD material (wav, mp3)
Probe Microphone Measurements module	
Stimuli:	Pink Noise, White Noise, Speech ANSI, ISTS, ICRA, Rainbow Passage, Tone Sweep, FreeStyle sound library with favorites list, live, recorded signals, recordings, CD material (wav, mp3)
Tests Available:	REUR, REUG, REOR, REOG, REAR, REAG, REIG, Noise Reduction, Customizable User-Tests. Dynamic REM, FreeStyle.
Standards	
Real Ear Measurement:	EN 61669, ISO 12124
Client Safety:	EN 60601-1, UL 2601-1, CAN/CSA –C22.2, NO 601.1-90
Type BF, IPX0	AURICAL FreeFit: EN 60601-1, Internal Powered,
EMC:	EN 60601-1-2, EN 300 328-2, EN 301 489-17

\*) Use only rechargeable batteries supplied by GN Otometrics A/S. \*\*) Any IEC/UL 60601 or IEC/UL 60950 certified power adaptor supplying 9 V DC, min. 300 mA and with a maximum available output of 15 W can be used. \*\*) When used on chargerstand.

Specifications are subject to change without notice. Copyright © GN Otometrics. 2011/03. 7-26-9920-EN/03. Part no. 7-26-99200-EN.



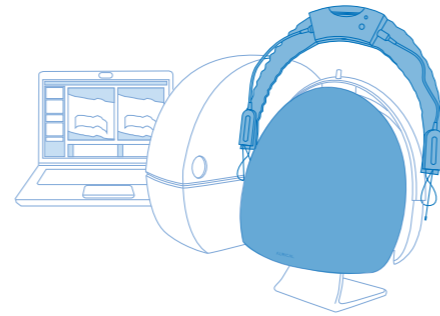
AURICAL FreeFit

The future of fitting

AURICAL

# The Probe Microphone Measurement unit

Newfound freedom



**Wireless design:** It's both easy to fit for you and comfortable for the client to wear.

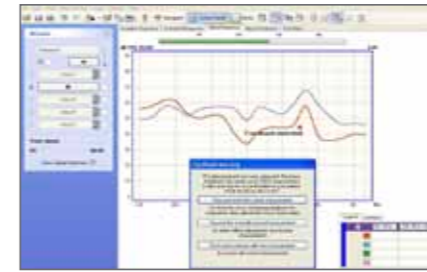
**Userfriendly probe:** The integrated rulers make it simple to insert the probe tube correctly.

There's no such thing as an average ear. The FreeFit PMM increases client satisfaction because you can verify fittings – with or without prescriptive targets. It lets you fit with confidence – and makes your clients feel confident in you. Being the only wireless Probe Microphone Measurements solution, it adds unprecedented flexibility and freedom to PMM. User tests, binaural capability and pre-defined measurement sequences make it fast and easy to use. And it includes convincing tools that help you clearly demonstrate the real benefits of hearing instruments like noise reduction, directionality and the like. The FreeFit consists of four unique elements: Dynamic REM, Speech Mapping, FitAssist and the FreeStyle mode.

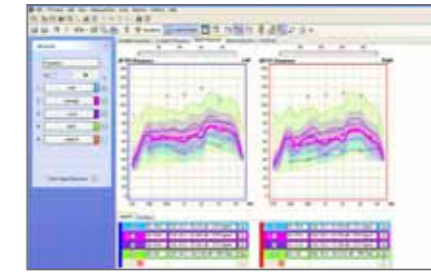
## THE FACTS

- Wireless
- Binaural
- Configurable user tests and sequencing
- Intuitive user interface
- FreeStyle with Feature-2-Benefit mode
- FitAssist (Feedback Finder and Occluded Probe-Tube Detector, OnTop mode)
- Real Speech stimuli including ISTS
- Dynamic Fitting using Percentile Analysis
- Chirp and OpenREM calibration
- ABR/ASSR data conversion
- Listen at the Eardrum
- Extensive sound library
- Dedicated noise reduction testing
- AURICAL Speaker (optional)

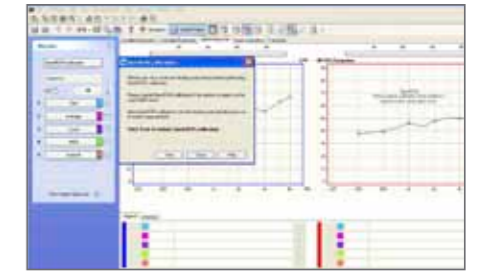
## PMM has never been easier



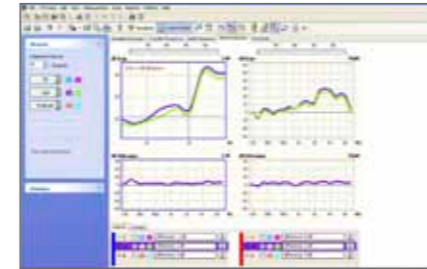
Feedback Finder



Dynamic signal analysis, Percentile Analysis



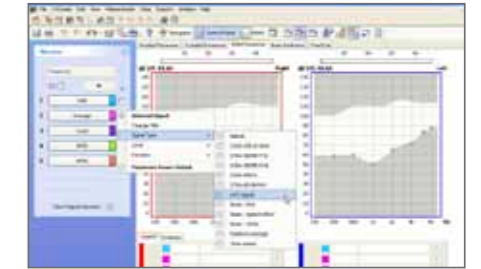
Designed for OpenREM



FreeStyle Curve Zoom



FreeStyle Customized User-Test



Ergonomic user interface



## The AURICAL Family Fully integrated with OTOsuite

The OTOsuite software integrates all the elements of the new AURICAL. It's intuitive, easy to learn and easy to use. It supports the entire client journey, from diagnostics and counseling, to fitting and verification. Simple to use user test functionality ensures configurable, consistent

and smooth workflows that can be customized to suit individual needs. And you work in a single software environment across modules. The result is a better fitting experience – for you and for your client.

See the videos about the FreeFit at [www.futurefitting.com](http://www.futurefitting.com)